

MDS QCT Version 9.17.00 Installation Instruction

Important Information:

- ❖ **Previous versions** of the MDS QCT **DO NOT NEED TO BE UNINSTALLED**. The software has been developed to allow continued use of previous versions as needed by the users.
- ❖ **THIS SOFTWARE SHOULD BE INSTALLED IN THE DEFAULT DIRECTORY (C:\MDSQCT) ON MACHINES WHERE PREVIOUS VERSIONS ARE INSTALLED**. A systems administrator should give the directory where the software is installed with full control (read, write, read & execute, etc.) access rights.
- ❖ There are now **TWO** files to download, unzip and execute. An additional downloadable file (i.e., "...Part 2") includes the MDS Assessment Item Sets files in PDF.

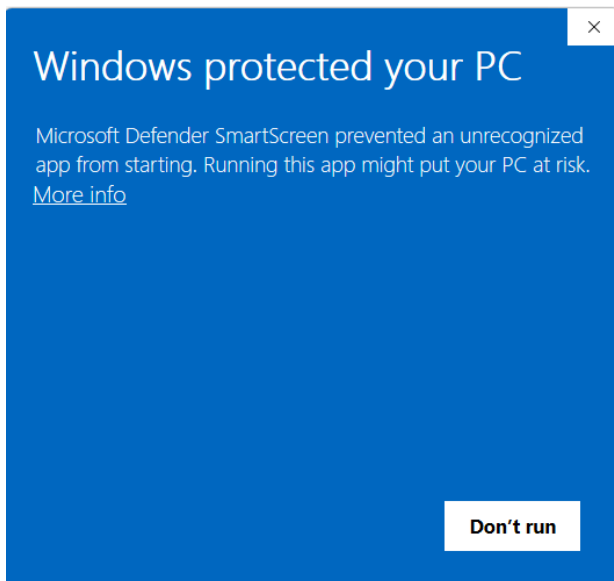
Stand-Alone Installation:

1. Download the MDS QCT software from the CMS.gov - MDS 3.0 Technical Information – **Downloads** web page. The URL is <https://www.cms.gov/Medicare/Quality-Initiatives-Patient-Assessment-Instruments/NursingHomeQualityInits/NHQIMDS30TechnicalInformation>
 - a. Navigate to the bottom of the web page to the Downloads section and click on the SetupMDSQCT91700_**Part1**.zip (ZIP) link and download the SetupMDSQCT91700_**Part1**.zip file.
 - b. Click on the SetupMDSQCT91700_**Part1** (ZIP) link and download the SetupMDSQCT91700_**Part2**.zip file.
 - c. Unzip the SetupMDSQCT91700_**Part1**.zip file
 - d. Unzip the SetupMDSQCT91700_**Part2**.zip file
2. Backup the existing installation directory if it exists (typically installed in C:\MDSQCT by default).
3. Execute the SetupMDSQCT91700_Part1.EXE install program and accept all the defaults. **LEAVE THE DEFAULT INSTALLATION DIRECTORY AS C:\MDSQCT (unless the software was previously installed in a different directory)**.
 - a. Navigate to the bottom of the web page to the Downloads and click on the SetupMDSQCT91700_**Part1**.zip (ZIP) link and download the SetupMDSQCT91700_**Part1**.zip file.
 - b. Click on the SetupMDSQCT91700_**Part2**.zip link and download the SetupMDSQCT91700_**Part2**.zip file.
 - c. Unzip the SetupMDSQCT91700_**Part1**.zip file.
 - d. Unzip the SetupMDSQCT91700_**Part2**.zip file.
4. Backup the existing installation directory if it exists (typically installed in C:\MDSQCT by default).
5. Execute the **SetupMDSQCT91700_Part1.EXE** install program and accept all the defaults. **LEAVE THE DEFAULT INSTALLATION DIRECTORY AS C:\MDSQCT (unless the software was previously installed in a different directory)**.

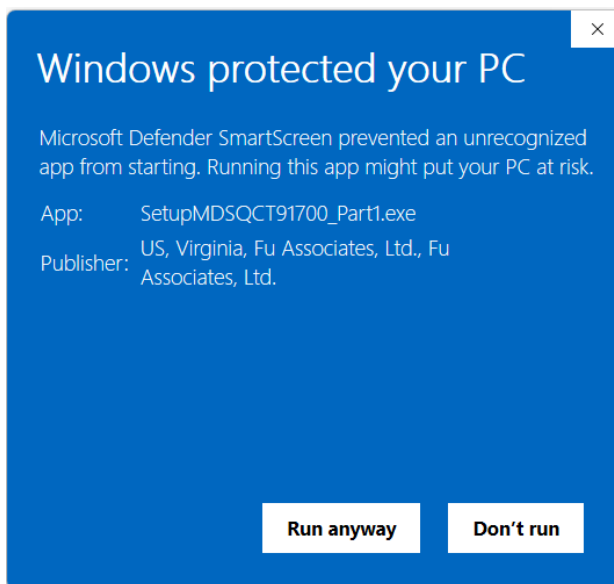
PLEASE NOTE: When you select the "Run" button to execute the program, the following MS Defender SmartScreen screen can be displayed. If this occurs, please perform the following:

MDS QCT Version 9.17.00 Installation Instruction

1. When the screen below is displayed, please click on the “More info” link to get the next screen with the Application and Publisher information.



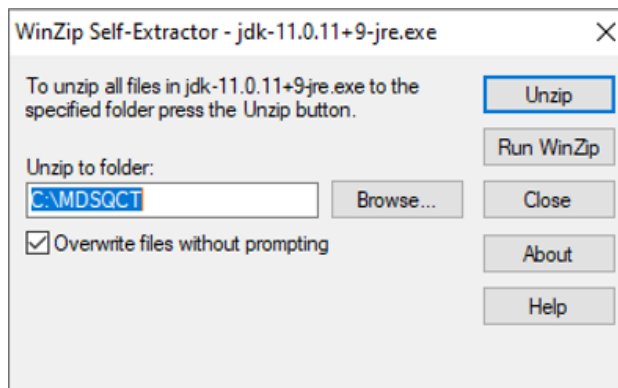
2. Please select the “Run anyway” option as it is safe to execute the program.



3. There are two new sets of files redistributed with the MDS QCT during the installation, you will be prompted with the following options:

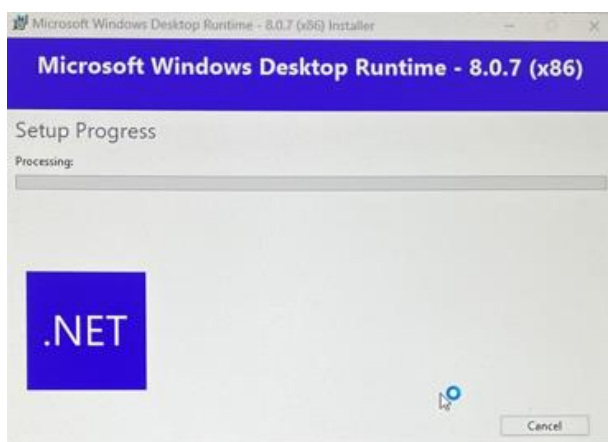
3a. Winzip Self-Extractor - AdoptOpenJDK JRE Files

MDS QCT Version 9.17.00 Installation Instruction



When prompted, leave the Default Unzip to Folder as C:\MDSQCT (unless the software was previously installed in a different location). The Unzip to Folder directory location should be the Installation Directory location.

3b. Microsoft Visual Studio Desktop Runtime Set-up Files



When prompted, no action is required.

4. Make sure the installation directory has full control access rights for all users of the software.
5. Execute the SetupMDSQCT91700_Part2.EXE install program and accept all the defaults. **LEAVE THE DEFAULT INSTALLATION DIRECTORY AS C:\MDSQCT (unless the software was previously installed in a different directory).**
6. **Execute the SetupMDSQCT91700_Part2.EXE** install program and accept all the defaults.
7. Repeat Steps #3a through #5 from above and this completes the installation.
8. If a mistake is made and the software is installed incorrectly, then uninstall the software and restore the backup you made and run the installation again using the instructions above.

MDS QCT Version 9.17.00 Installation Instruction

Starting Stand-Alone Software:

1. To run the local workstation version of the MDS QCT software, click on the MDS QCT shortcut-icon from the desktop (if this step was selected during installation).
2. When the program starts up, log in as ID1/ID1 (or whatever users have been previously defined). Please note that ID1 is used for both User ID and password.
3. If this is the first time the software has been installed, you can test the software by importing test data as follows:
 - a. Select Import Assessment button on the MDS QCT Management Window.
 - b. Select the Choose File button on the Import Window.
 - c. Select one of the test files displayed in the file browser window.
 - d. Select the Import button on the Import Window.
 - e. Select the Close button on the Import Window.
4. From the MDS QCT Management Window, select different residents and assessments for your work.

Network Installation:

1. Download the MDS QCT software from the CMS.gov - MDS 3.0 Technical Information – Downloads web page. The URL is <https://www.cms.gov/Medicare/Quality-Initiatives-Patient-Assessment-Instruments/NursingHomeQualityInits/NHQIMDS30TechnicalInformation>
 - a. Navigate to the bottom of the web page to Downloads and click on the SetupMDSQCT91700_Part1 (ZIP) link and download the SetupMDSQCT91700_Part1.zip file.
 - b. Click on the SetupMDSQCT91700_Part2 (ZIP) link and download the SetupMDSQCT91700_Part2.zip file.
 - c. Unzip the SetupMDSQCT91700_Part1.zip file.
 - d. Unzip the SetupMDSQCT91700_Part2.zip file.
2. Backup the existing installation directory on the network, if it exists (typically installed in G:\MDSQCT the default for example).
3. Execute the SETUPMDSQCT91700_Part1.EXE install program from any machine that has access to the network drive (or on the server) and change the installation directory to network server drive where the software is to be installed. **LEAVE THE DEFAULT INSTALLATION DIRECTORY (for example G:\MDSQCT) unless the software was previously installed in a different directory.**
4. Make sure the installation directory has full control access rights for all users of the software on the server.
5. Execute the SetupMDSQCT91700_Part2.EXE install program from any machine that has access to the network drive (or on the server) and change the installation directory to network server drive where the software is to be installed. **LEAVE THE DEFAULT INSTALLATION DIRECTORY (for example G:\MDSQCT) unless the software was previously installed in a different directory.**

MDS QCT Version 9.17.00 Installation Instruction

6. Then execute the SETUPMDSQCT91700_Part2.EXE install program and repeat Steps #3 - #5 above to complete the installation.
7. If a mistake is made and the software is installed incorrectly, then uninstall the software and restore the backup you made and run the installation again using the instructions above.
8. On the client machines, execute the SETUPMDSQC91700_client.EXE install program and accept all the defaults. **LEAVE THE DEFAULT INSTALLATION DIRECTORY AS C:\MDSQCT.**
9. For network installation the system administrator must give each workstation security access to the application on the network server. This can be done using the CasPol utility. An example (where the software is installed in G:\MDSQCT folder) of the command that must be run on each workstation would be: `caspol.exe -m -ag 1.2 -url file://g:\mds_qc* FullTrust`

More detail on this security access utility can be found at the following link:
<http://blogs.msdn.com/shawnfa/archive/2004/12/30/344554.aspx>
10. The default short cut (under the Start, Programs menu) created by the client installation should be changed to point to the program file (MDSQCT.exe) on the network server.
11. This completes installation on the client machines.

Starting Network Software:

1. To run the network version, go to the MDS QCT Client shortcut created by the system administrator and select it.
2. When the program starts up, log in as ID1/ID1 (or whatever users have been previously defined). Please note that ID1 is used for both User ID and password.
3. If this is the first time the software has been installed, you can test the software by importing test data as follows:
 - a. Select Import Assessment button on the MDS QCT Management Window.
 - b. On Import Window select Choose File button.
 - c. Select one of the test files displayed in the file browser window.
 - d. Select the Import button on the Import Window.
 - e. Select the Close on the Import Window.
4. From the MDS QCT Management Window you can now begin to select different residents and assessments for your work.